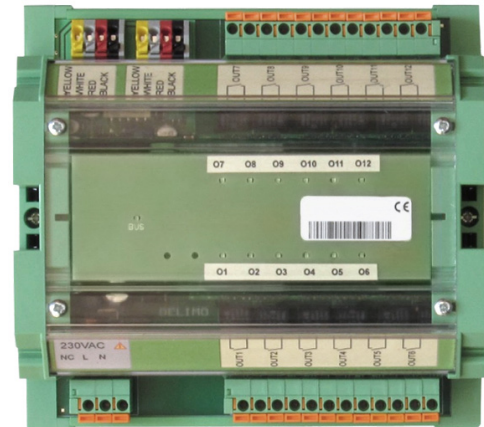


### DIGITAL I/O FIELD UNIT

- 12 digital outputs (relays)
- For DIN rail mounting
- 230 V AC mains power
- Programmable relay outputs safe state



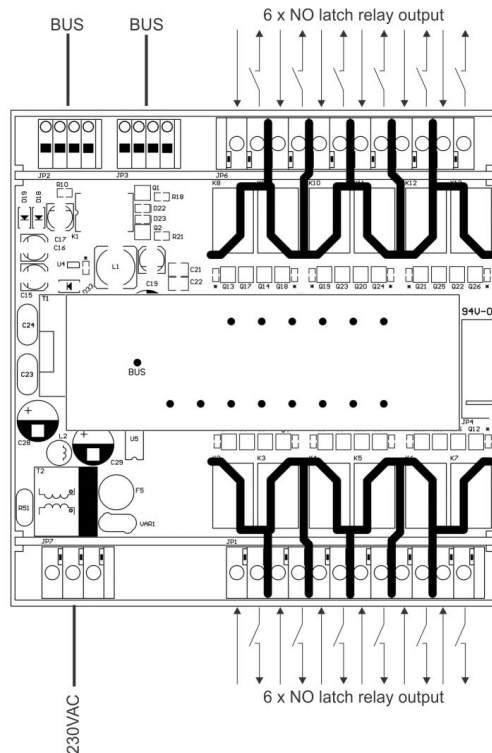
### TECHNICAL DATA

ELECTRICAL DATA	
Nominal voltage range	AC 100 ... 230 V 50/60 Hz
For wire sizing	2 VA
Power consumption from mains	1 W
Power consumption from bus	5 mW
Connecting	Power supply terminal 3 x 1.5 mm <sup>2</sup> wire 2 x 6 outputs terminal 12 x 1.5 mm <sup>2</sup> wire 2 x Bus terminal 4 x 1.5 mm <sup>2</sup> wire
Wire stripping length	10 mm
Output type	Latch relay
Output max load	Resistive: 0.2 A at 250 VAC, 2A at 30VDC Inductive: 0.1 A at 250 VAC, 1A at 30VDC
SAFETY	
Degree of protection	IP20
EMC	CE according to 2004/108/EC
Low-voltage-directive	CE according to 2006/95/EC
Ambient humidity range	IEC 60730-1 max. 95 %
Ambient temperature range	-20 ... +60 °C
Non-operating temperature	-40 ... +85 °C
Maintenance	Maintenance-free
DIMENSIONS / WEIGHT	
Dimensions	137 x 127 x 50 mm
Weight	450 g

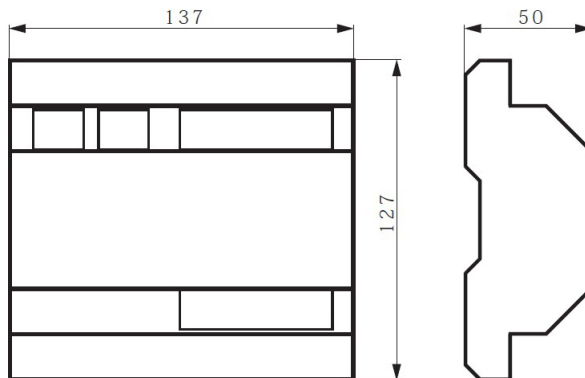
### PRODUCT FEATURES

12 digital outputs	ZENiX D012 has 12 digital outputs. It is mountable on DIN rail. Outputs are NO relay contacts. The unit is connected to the Ringbus master controller via a 4 wire ring bus communication.
Predefined address	Each unit has a predefined address and therefore has not to be addressed during the system commissioning.
Work without 230 V	ZENiX D012 unit is able to work without 230 V, but then it is only sending information about its power supply condition and is not able to turn on/off the outputs.
Outputs safe state	Relay outputs will go in to pre-programmed safe state if communication is lost for more than 10s or around 1s after loss of the external power. Possible safe states are CLOSE, OPEN and STAY.

## WIRING AND RESOURCES



## DIMENSIONS AND MOUNTING



## SAFETY NOTES



- The device is not allowed to be used outside the specified field of application, especially in aircraft or in any other airborne means of transport.
- Caution: Power supply voltage!
- It may only be installed by suitably trained personnel. Any legal regulations or regulations issued by authorities must be observed during assembly.
- The device may only be opened at the manufacturer's site. It does not contain any parts that can be replaced or repaired by the user.
- The device contains electrical and electronic components and is not allowed to be disposed of as household refuse. All locally valid regulations and requirements must be observed.

If the product is manipulated in any other way than described, Rf-Technologies will decline any responsibility and the guarantee will immediately expire!

